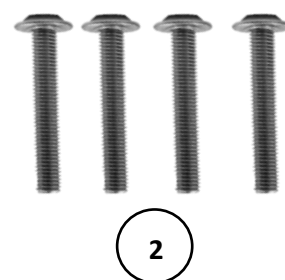
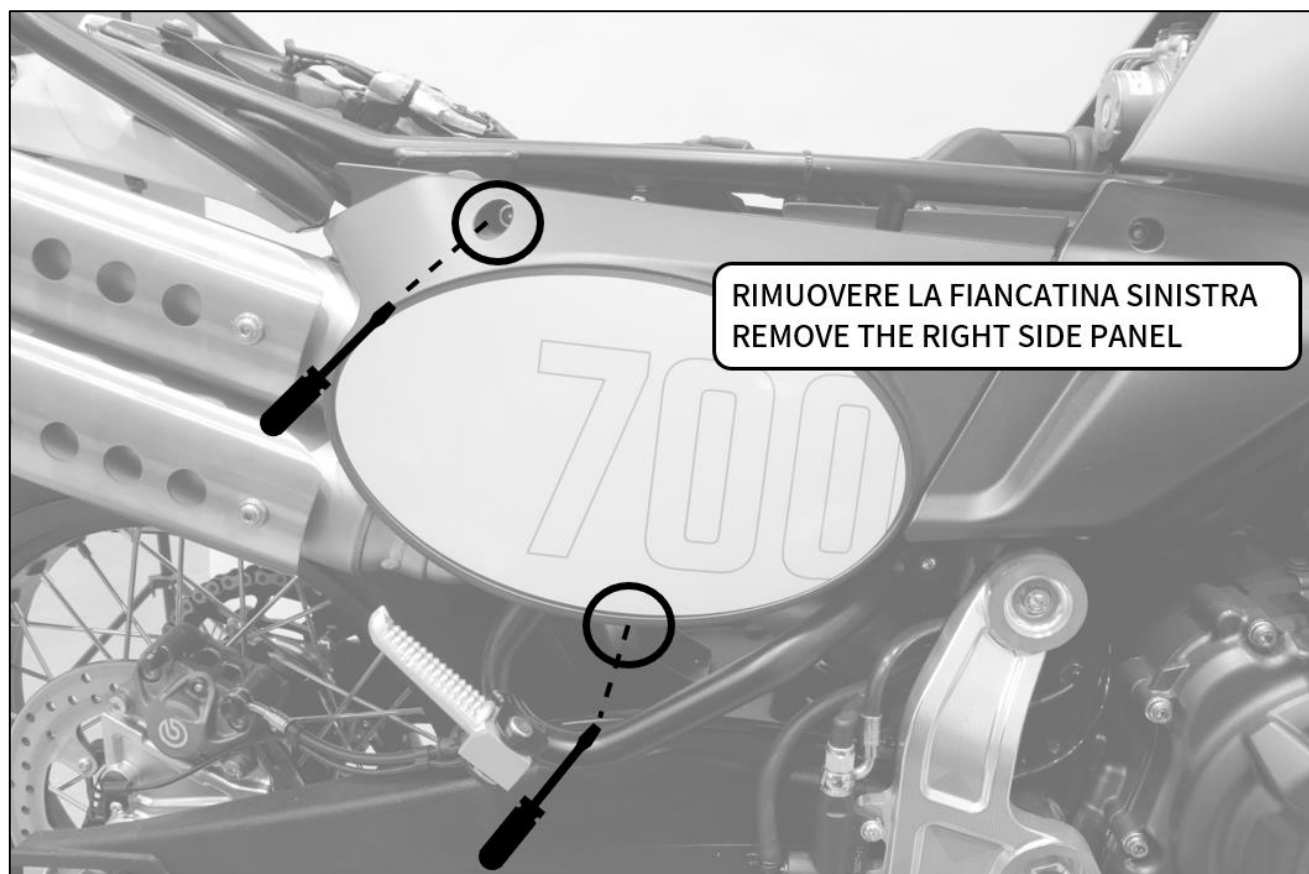
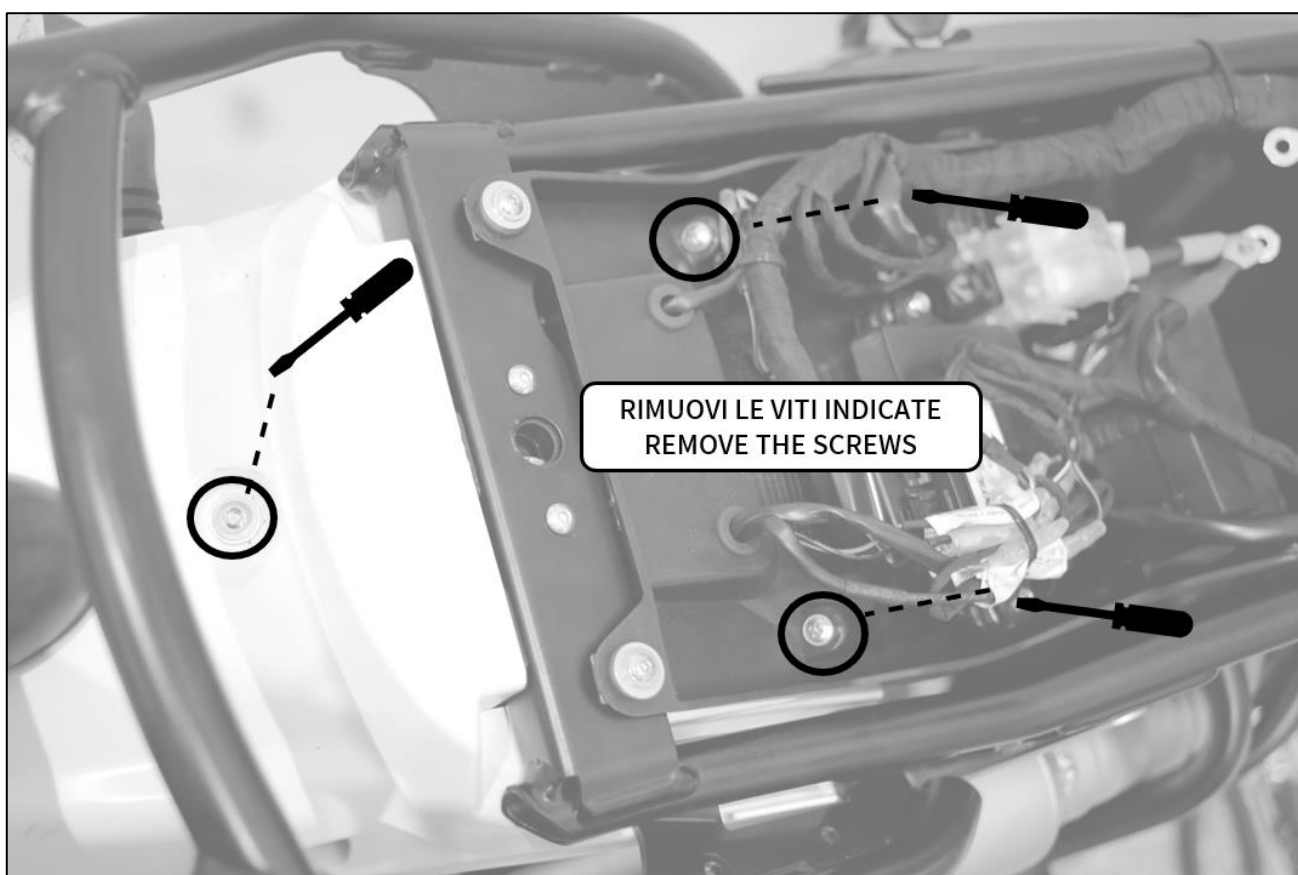
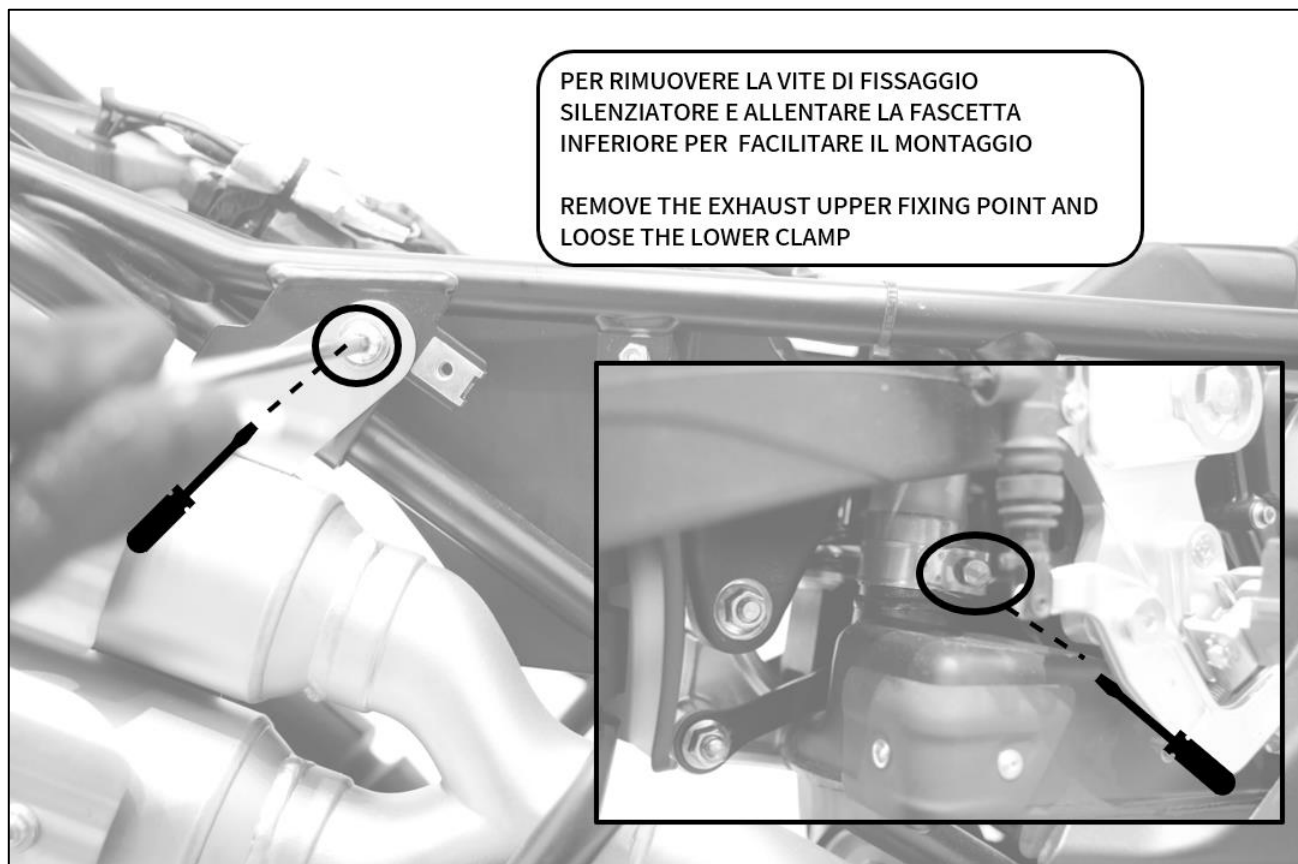
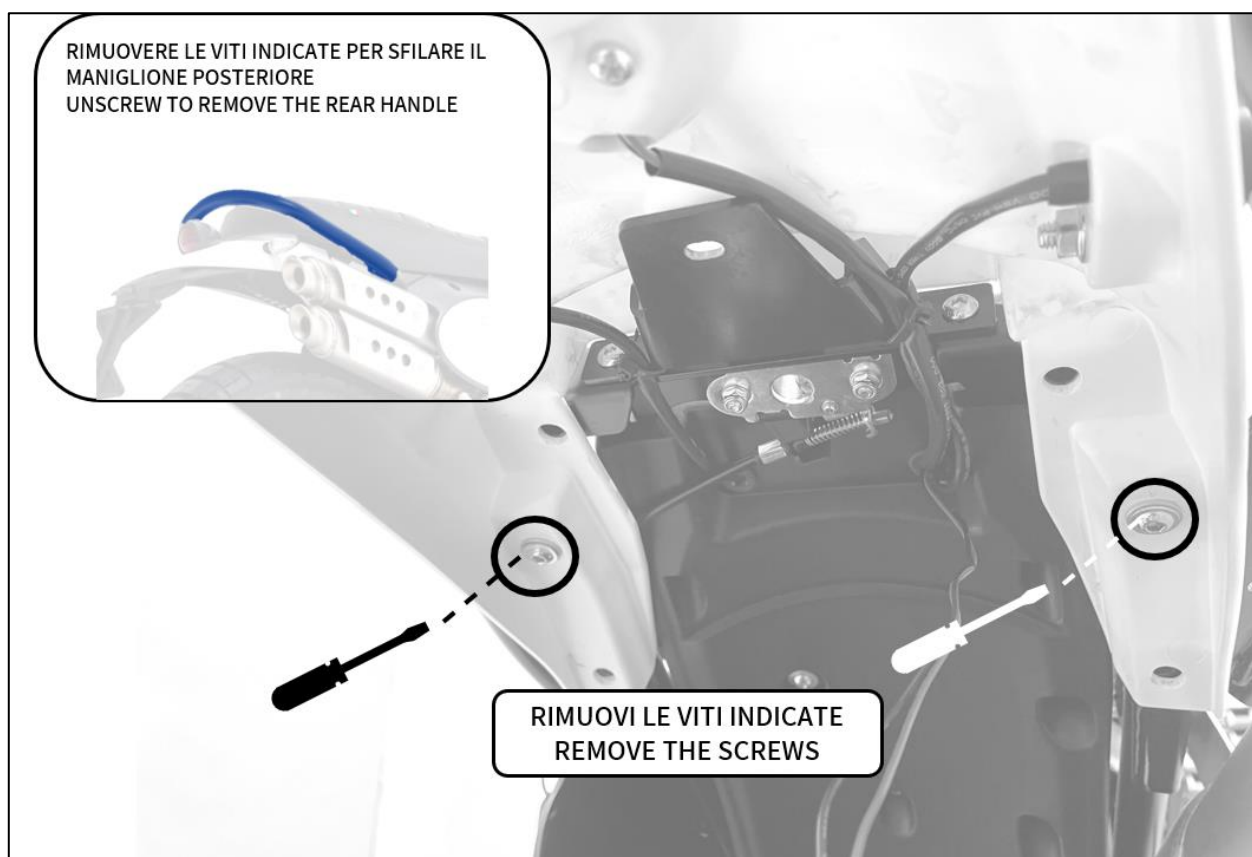
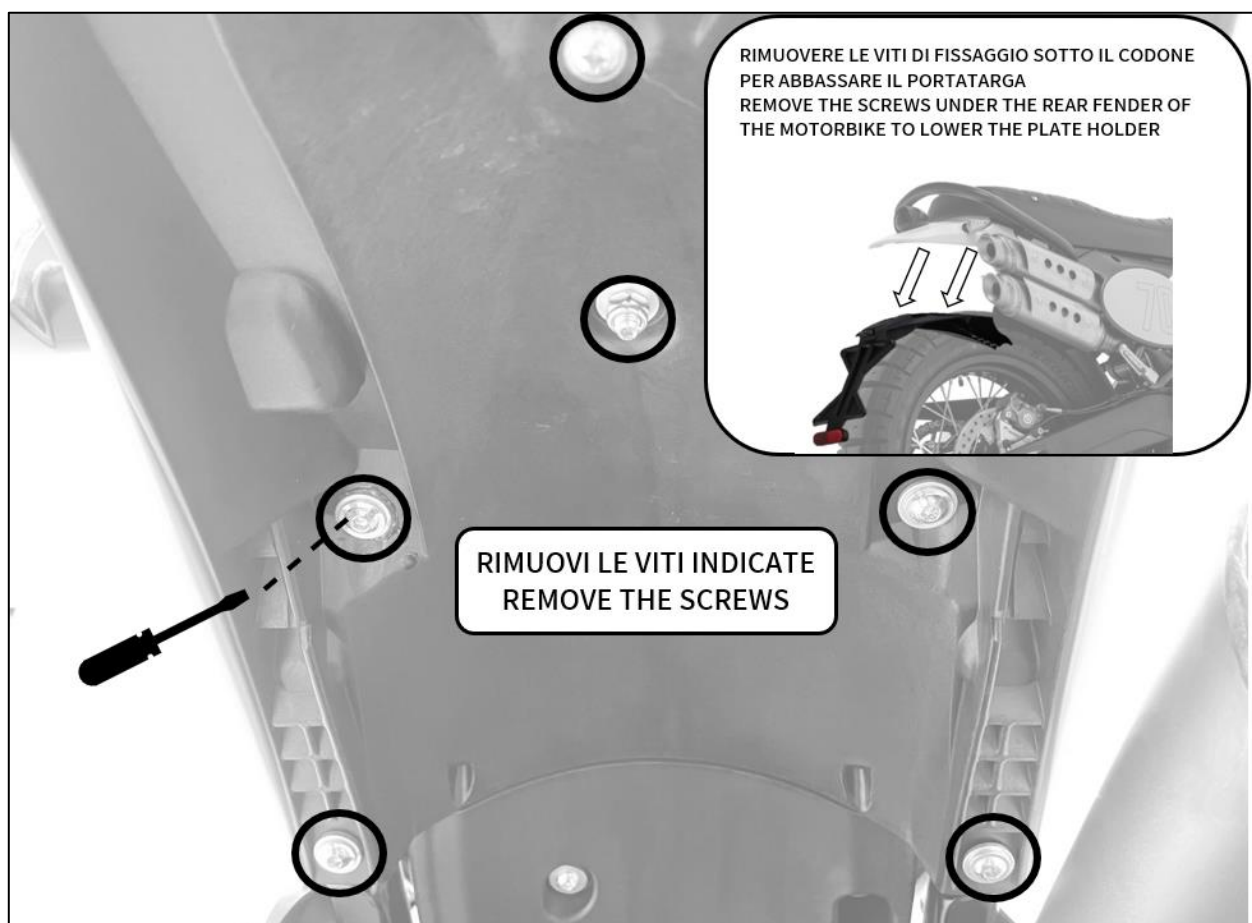


N°	Descrizione/Description	Caratteristiche/Features	Codice/Code	Quantità/Quantity
1	Telaio tubolare - Frame	-	-	1
2	Vite - Screw	M6X20 TBFL	-	4







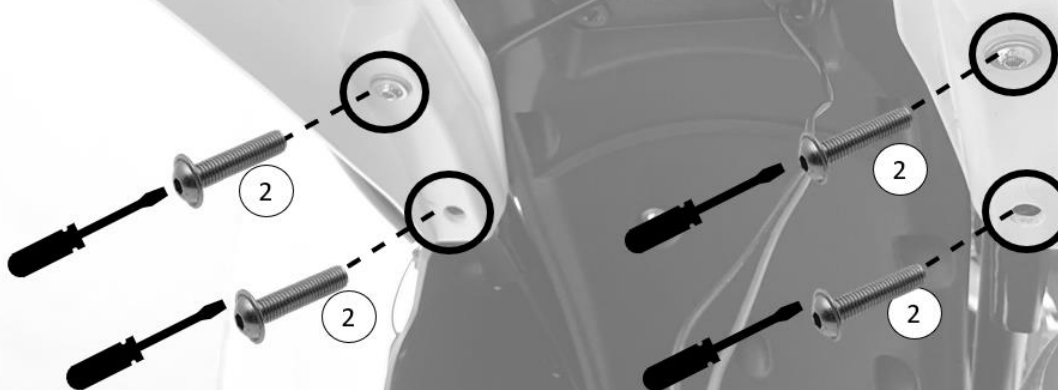


INSTALLARE IL PORTAPACCHI (1) E ALLINEARE I PUNTI DI FISSAGGIO

MOUNT THE REAR CARRIER (1) AND ALIGN HOLES



PUNTARE LE VITI (2) M6X20
HAND-TIGHTEN SCREWS (2) M6X20



IMPORTANTE!!

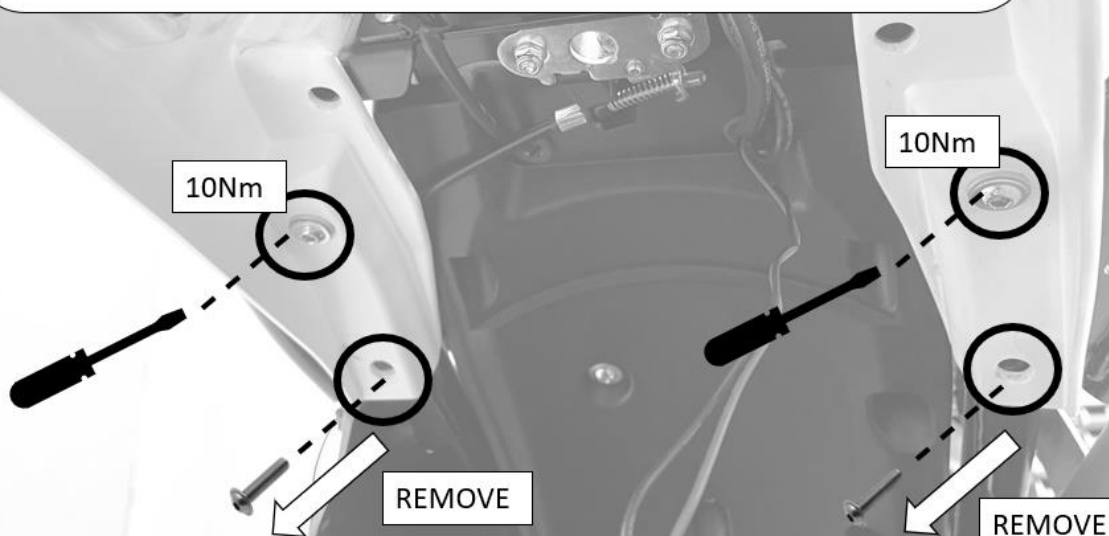
SEGUIRE IN ORDINE I SEGUENTI STEP:

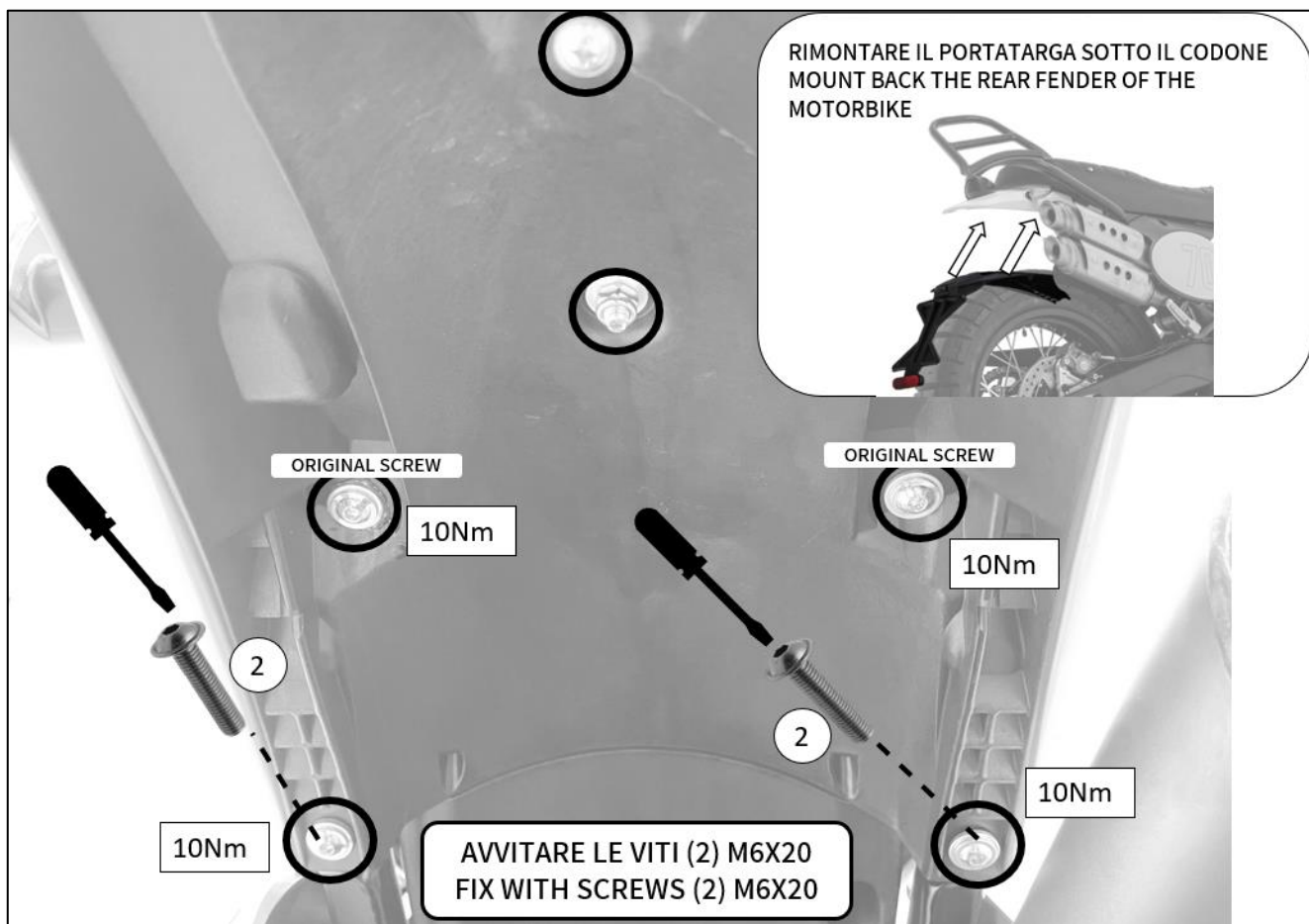
- 1) SERRARE A COPPIA DI 10NM LE VITI (2) NEI FORI SUPERIORI
- 2) RIMUOVERE LE VITI INFERIORI COME INDICATO IN FIGURA

IMPORTANT!!

PLEASE FOLLOW IN ORDER THE STEPS:

- 1) TIGHTEN TO 10NM THE UPPER SCREWS (2)
- 2) REMOVE THE LOWER SCREWS SHOWN IN PICTURE







DISCOVER ALL THE ACCESSORIES AND BE READY FOR THE ADVENTURE
WWW.FANTICMOTOR.COM

! **IMPORTANTE / IMPORTANT** !

_ LIMITE DI CARICO: 10 Kg.

_ LIMITE DI VELOCITA' CON BORSE FANTIC: 120 Km/h.

La mancata osservanza di queste linee guida può provocare danni alla moto, al bagaglio o al contenuto del bagaglio e causare gravi incidenti al conducente della moto, al passeggero o ad altri viaggiatori sulla strada.

_ DO NOT LOAD LUGGAGE WITH MORE THAN 10Kg.

_ DO NOT EXCEED 65 MILES PER HOUR WITH FANTIC LUGGAGE FITTED.

Failure to follow these guidelines may cause damage to the motorcycle, luggage or luggage content and cause injury or death to the rider, passenger or other road users.

_ NE PAS CHARGER LA SACOCHE AVEC PLUS DE 10 KG.

_ NE PAS DEPASSER LA VITESSE DE 120 KM/H AVEC LA SACOCHE MONTEE FANTIC.

Le non respect de ces consignes peut entrainer des dommages à la moto, au bagage ou au contenu du bagage et blesser ou tuer le pilote, le passager ou les autres usagers de la route.

_ NO CARGAR LA BOLSA CON MAS DE 10 KG.

_ NO EXCEDER LA VELOCIDAD DE 120 Km/h CON LA BOLSA FANTIC MONTADA.

La no observación de estas sugerencias puede provocar danos a la moto, al equipaje o al contenido del equipaje y causar heridas o la muerte del conductor, pasajero u otros viajeros de la carretera.

_ DIE MAXIMALE BELASTUNG VON 10 KILOS PRO TASCHE NICHT UBERSCHREITEN.

_ DIE HÖCHSTGESCHWINDIGKEIT VON 120 KM/H MIT DEN BEFESTIGTEN TASCHEN RESPEKTIEREN.

Bei Nichtbeachtung dieser Hinweise konnten Schäden am Fahrzeug, am Gepäck oder am Inhalt des Tankrucksacks verursacht werden. Dadurch kann es auch zu Stürzen, Verletzungen oder den Tod des Fahrers, des Beifahrers oder von anderen Verkehrsteilnehmern kommen.